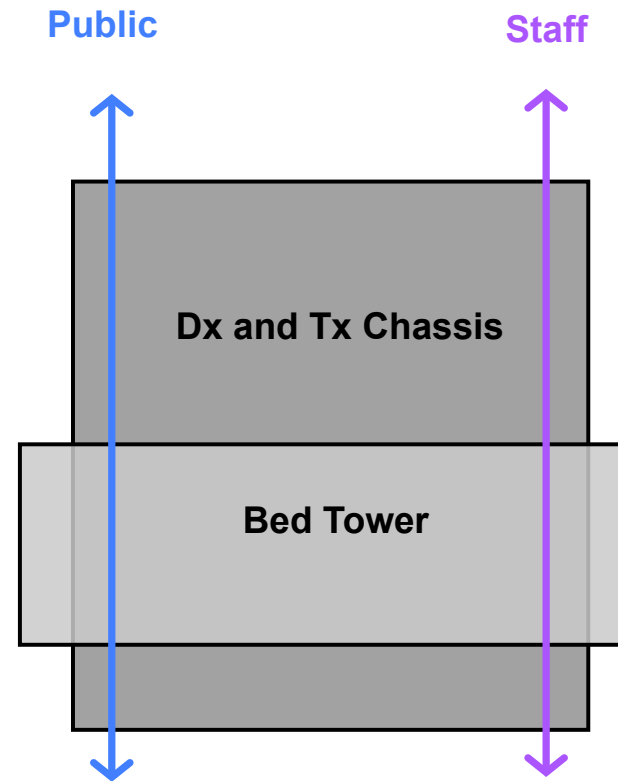


Design Intent

Building Form

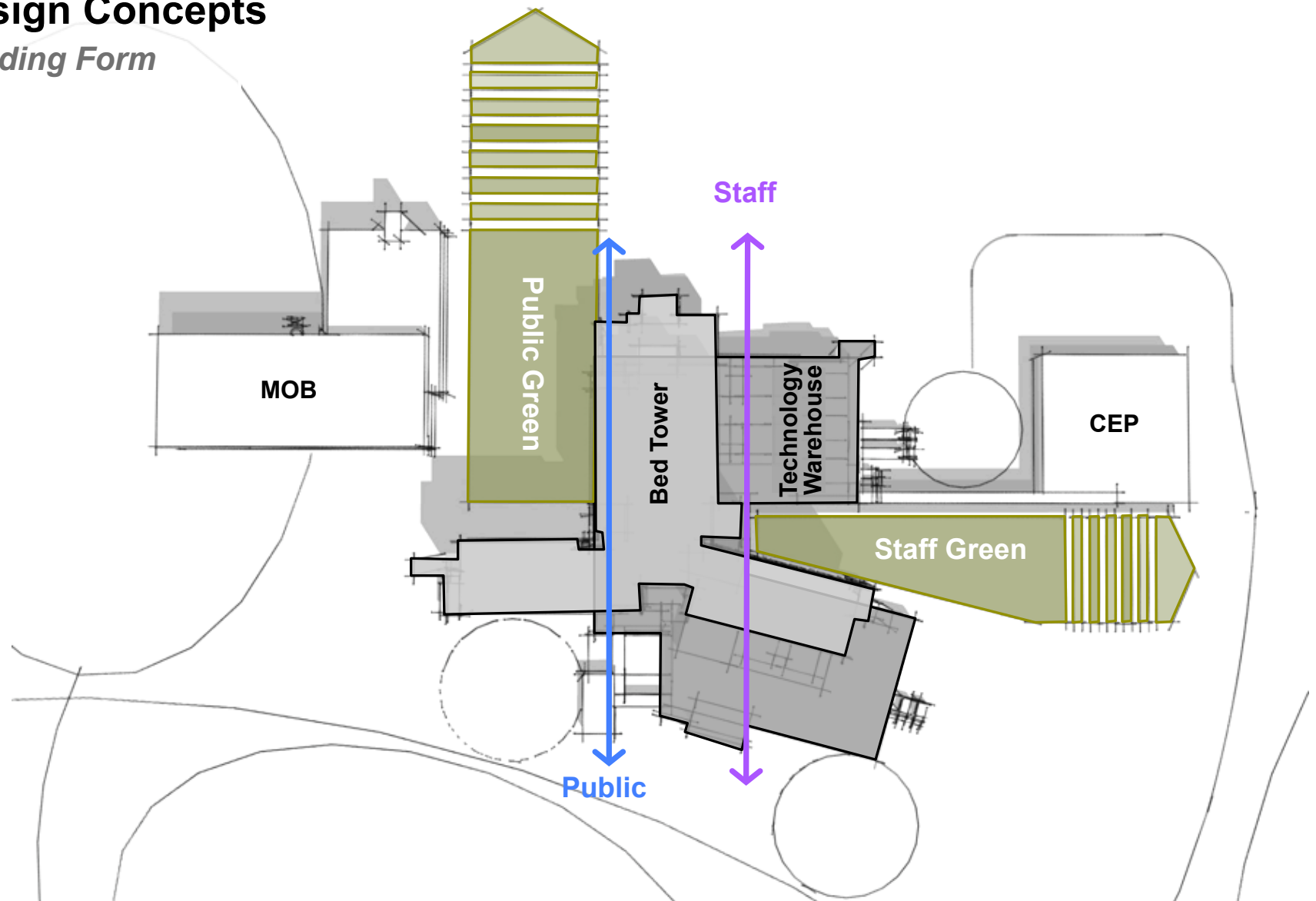
Traditional Hospital Form:

- Lack of Natural Light
- No Connection to Outdoors/ Nature
- No Separation of Inpatient and Outpatient Spaces



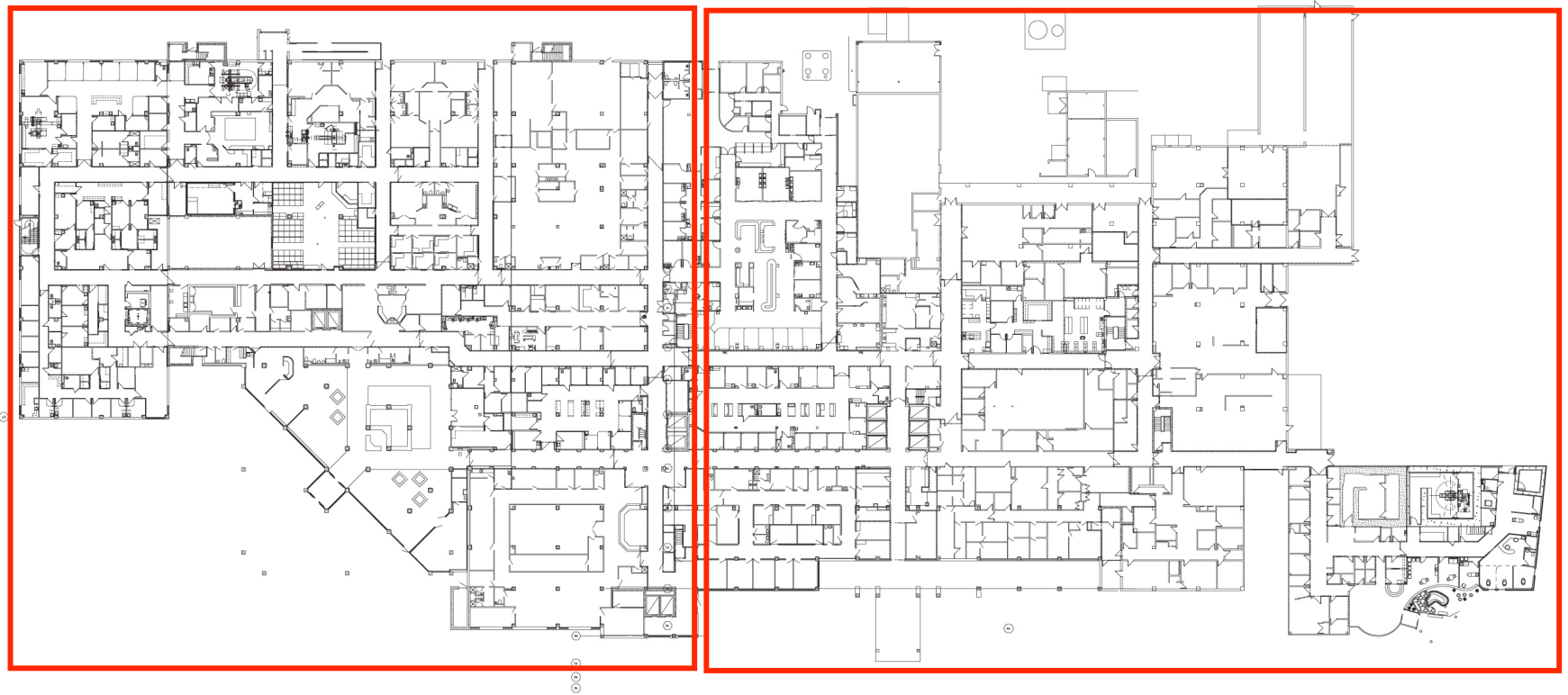
Design Concepts

Building Form



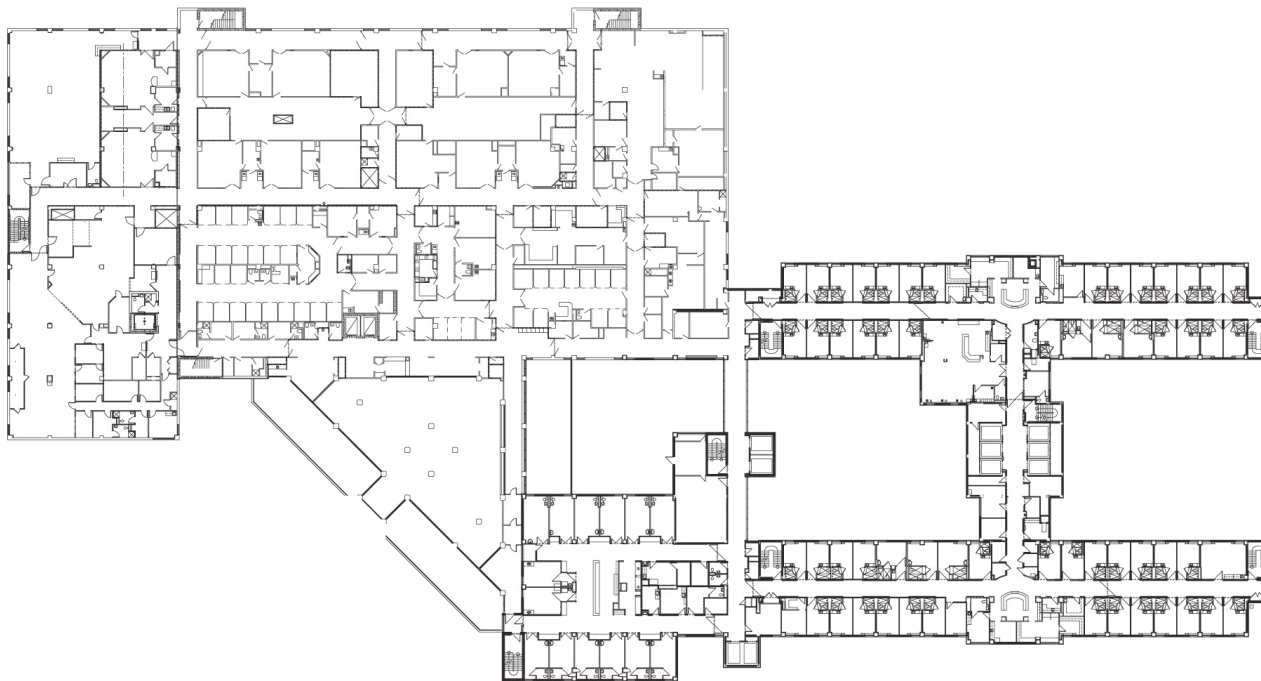
Design Intent

Building Form



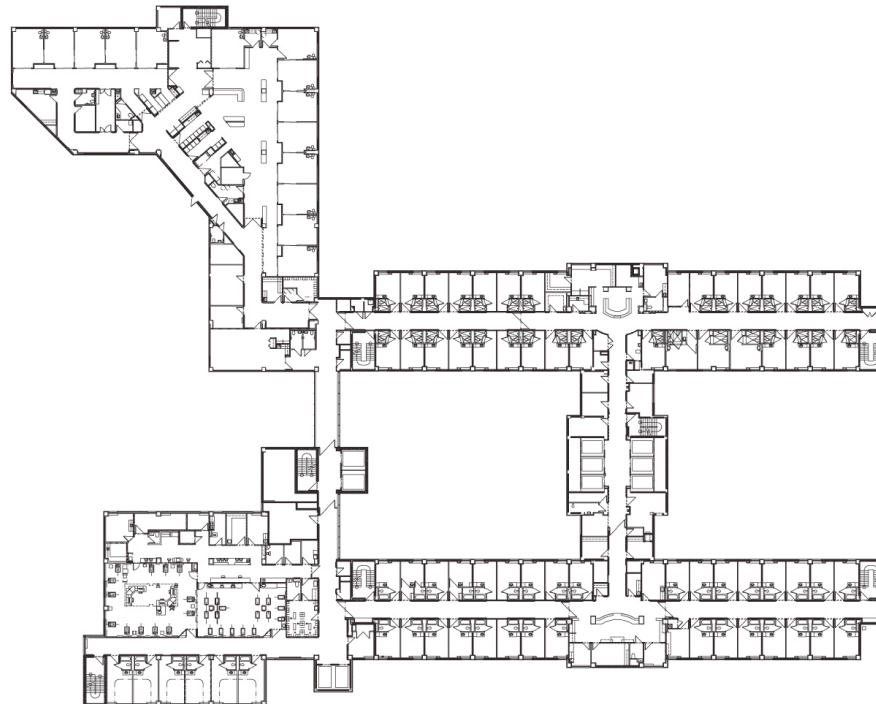
Design Intent

Building Form



Design Intent

Building Form



Space Programming

Purpose

- Project Scope
- Project Cost
- Operational Model

Space Programming

Programming Tools

- Space Program
- Program Narrative
- Flow Diagrams
- Supporting Graphics

Space Programming

Program Summary

Key Room Type Summary

Base Program incorporating Scope Revisions:		Existing Hospital:	
138	Inpatient Beds 96 - Acute Care 24 - Intensive Care 18 - Women's Service	113	Inpatient Beds 79 - Acute Care 12 - Intensive Care 22 - Women's Service (LDR)
44	Shelled Inpatient Beds - Add Alternate 32 - Shelled Beds		
20	Nursery Beds	15	Nursery Beds
25	Outpatient Beds 5 - Observation Beds 20 - OP Surgery Prep/Post	24	Outpatient Beds 4 - PIP 20 - Prep/Post (2 - Cath)
8	Operating Rooms 8 - OR's 2 - CV OR's 5 - General OR's 1 - Cysto	6	Operating Rooms 6 - OR's 1 - CV OR 4 - General OR's 1 - Cysto (2 - Endo)
3	Shelled Operating Rooms		
3	Cath Lab / Interventional Rooms 1 - Interventional Room 1 - Cath Lab 1 - EP Lab	2	Cath Lab / Interventional Rooms 1 - Interventional Room 1 - Cath Lab
1	Cath Lab 1 - Cath Lab - not Equipped		
11	Imaging Rooms 2 - Rad/Fluoro 2 - Gen Rad 2 - CT 1 - MRI 2 - Nuc Med 2 - Ultrasound	9	Imaging Rooms 2 - Rad/Fluro 2 - Gen Rad 1 - CT 1 - MRI 1 - Nuc Med 2 - Ultrasound
1	Shelled Imaging Rooms 1 - Shelled MRI		
20	Emergency Department 2 - Trauma 12 - Emergent 6 - Fast Track (Occupational Medicine/Employee Health	18	Emergency Department 18 - Emergent

Space Program

Departmental Summary

Team Programming Teams No. - Departments/Area		(100% of Scope Revisions) Current Program	Potential Program Changes	Comments / Notes
1	Plant Services	4,217		
2	Pharmacy	3,029		
3	Medical Records	3,383		
	Records and Staff Area	3,046		
	Coders	338	338	Relocation of Coders to MOB
4	Physical Therapy	869		
5	Emergency Department	18,142		Reduced from 25 to 20 Positions
6	Pediatrics & Nursery	3,504		20 Bassinets (12 Well Baby & 8 Level II) - Reduced from 26 Bassinets (16 Well Baby & 10 Level II)
7	Pastoral Care Offices	287		
8	Dietary	17,499		Reduced by 10% BGSF
9	Volunteers Office	1,029		
10	Patient Access / CAC / CBX	3,257		
11	Laboratory	8,289		
12	Acute Care	71,794		96 Inpatient Beds
	Shell Space	16,808		Option C: 24 ICU Beds & 20 Acute Beds
13	Intensive Care	22,900		18 Intensive Care (Inpatient Beds): Option C: 24 ICU Beds
	Shell Space	22,900		
14	Surgery & Support	36,643		8 OR's + 3 Shelled OR's - Reduced PACU, IP Holding, & Equipment Storage;
	Shell Space	5,456		
14a	Sterile Processing	6,284		
15	Accounting / Business Support	1,654		
16	Administration & Support Office Space	26,575		
	Executive Administration	5,983		See Below
	Education	11,737		See Below
	Chapel & Entry:	8,856		
			17,720	Relocation of Exec. Admin Suite & Educ. to MOB
17	Women's Services	16,899		20 Inpatient Beds: Option C: 18 LDRP's
18	Cardiology	9,908		1 Cath Lab, 1 EP Lab, & 1 Specials Room - 1 Cath Lab built but not equipped
19	Information Systems	5,223		
	Office Space	3,143		
	Server Room	2,080		
			3,143	Relocation of Non-Clinical Support to MOB
20	Clinical Engineering	1,236		
21	Housekeeping & Linen	3,805		
22	Ambulatory Care Center	13,824		25 OP Beds/Positions - Reduced by 3 Positions
	Outpatient Prep/Post, PAT, Obs	12,485		
	Chemo & Dialysis	1,339		
			1,339	Relocation of Chemo & Dialysis to MOB
23	Materials Management	3,929		
24	Patient Care Administration	5,598		
25	Diagnostic Imaging	23,482		Breast Health & Mobile Pad Removed from Program
	Shell Space	1,280		
26	Staff Amenities/Lockers/Lounge	3,065		
			22,539	Total Relocations to MOB
Total Hospital with Shell Space		316,323		293,784 (Total less Relocations to MOB)
	Shell Space	46,441		
Total Hospital Less Shell Space		269,879		247,341 (Total less Relocations to MOB)
		15,000	15,000	Central Energy Plant
		331,323	308,784	Total BGSF with Shelled Beds

Space Program

Room-by-room Schedule

Adult Emergent Treatment Suite

Primary Activity Areas

14

Trauma Room	2	350	700
Toilet, Patient	1	45	45
Scrub Stations	2	10	20
Tx Critical Rooms	4	180	720
Tx/Exam Rooms	1	150	150
Isolation Tx/Exam Rooms	1	150	150
Isolation Toilets	1	55	55
Secure Holding	1	150	150
GYN Room	2	150	300
Toilet	1	55	55
ENT Room	1	150	150
Cast Room	2	150	300
Central Cast sink area	1	40	40
Storage	1	80	80

Specialty Rooms for Isolation, Secure Holding, GYN, ENT, & Cast have been re-sized and configured to be used as universal treatment rooms.

Open Bay concept with overhead X-Ray - accommodate 3rd Patient Position

May want to reduce rooms to 140, but want columns and family space - Reduced from 6 to 1

Handicap Accessible

Slit lamp room could be shared with Occ. Health

Single Room with divider

Support

Team Work Station

Unit Secretary

Dictation

PAC Station

Copier/Fax/Printer

Pneumatic Tube

Monitors Station

Team Work Area

Handwashing Sink

Purse Lockers

Physician Work Area

Circulation Factor

2	30
0	15
1	50
0	20
1	10
1	30
4	30
1	15
0	0.2
4	30
	1.3

506 Need electronic workboard to track patients

May be two monitors

Staff Toilets	1	45	45
Nutrition Alcove	1	36	36
Soiled Utility	1	100	100
Clean Utility	1	120	120
Lab/Specimen Holding	1	25	25
Medication Room	1	80	80
Omniceil Alcoves	2	30	60
Crash Cart Alcove	2	18	36
Stretcher Alcove	2	20	40
Laundry Exchange Cart Alcove	2	25	50
Equipment Storage Room	2	100	200
Suture Storage Room	1	80	80
Patient Toilet	2	55	110

Needs to be adjacent to Pneumatic Tube

Space Program

Program Narrative

We have defined the following Secondary Treatment Areas for the ED:

- The Rapid Admission Unit, RAU, is where all unscheduled ED patients waiting to be admitted and/or Direct Admits are placed for further treatment, consent, resource utilization screening and financial screening. Admissions processing and necessary laboratory and imaging tests may be conducted at this time. This reduces the turnaround time in the emergent care unit by releasing the exam beds when the main examination is complete and the decision to admit is made. Length of stay can also be decreased by the rapid initiation of admission orders, i.e. antibiotics.
- Extended Care Area/Chest Pain, ECA/CP provides rooms for patients who are in need of observation, waiting for special tests, or in need of special medical treatments, i.e. IV fluids for rehydration. Potential heart patients can be observed in this area awaiting tests or test results and determination of best course of treatment.
- The Psychiatric Area is a separate entity of the hospital, but is adjacent to the ED. This is a six bed screening area that psychiatric patients can access by a separate entrance to be evaluated by Mental Health Evaluators. If these patients are in need of a medical screening or treatment, the patient could be transferred to the ED.